



Help Create a World Class Parks Legacy for the Capital Region

Protect Our Wild Hills and Beaches

The Land Conservancy of BC and Capital Regional District (CRD) Parks have worked together for over a decade in a visionary partnership to create a system of world class parks and protected areas for the Vancouver Island region. Through CRD's Regional Parks' Land Acquisition Fund, this effective campaign purchased and protected over 7,400 acres of spectacular new parkland. Between 2000-2009, the CRD contributed \$20,149,000 (66 percent) and TLC and partners \$10,555,000 (34 percent) to the fund. Some of the most popular public icons of southern Vancouver Island's natural landscape such as the Sooke Hills, Sooke Potholes, Matthews Point in Active Pass, Bourgoyne Bay and Southwest Salt Spring Island, the Thetis Lake to Mount Work Trail Corridor, and the Sea to Sea Green Blue Belt were saved throughout this innovative partnership.

The successful Regional Parks' Land Acquisition Fund has been continued for additional 10 years. The fund will increase from \$12 to \$20 per average household assessed value over the next five years (2010-2014) at a rate of \$2 per year and be maintained at \$20 to 2019. The increase in the fund for 2010-2019 will result in \$2 million to \$3.2 million available per year for land acquisitions and \$30 million over the entire 10-year period.

TLC and CRD Parks' first campaign under the next 2010-2019 plan is to purchase 5,800 acres of Western Forest Products land in the Jordan River, Sandcut Beach, and Sooke Hills area. As of September 2011, TLC requires \$2.7 million to complete our **Wild Hills and Beaches Campaign**. The amount might be reduced through carbon credits and the CRD's sale of the lands with lesser value. Once this acquisition is complete over 90% of our region's Sea to Sea Green Blue Belt will be protected forever.

WILD HILLS

Sooke Potholes to Sooke Hills - a critical link in the Sea to Sea Green Blue Belt that includes an historic trail loop from Todd Creek to Charters Creek via Grasse Lake in the heart of the Sooke Hills wilderness area.

WILD BEACHES

Sandcut Beach - a West Coast paradise. Jordan River Beach - a popular surfing destination.

Please help us make this parkland a reality. Make your donation today!

"Many individuals, families, and university classes have come to enjoy the trail, the forest and the spectacular beach. Sandcut Beach is indeed one of British Columbia's 'Special Places' with amazing beauty and infinite educational value. It would be a tragedy indeed if it were lost to development," Nancy J. Turner, Distinguished Professor, University of Victoria, School of Environmental Studies.

WILD HILLS

Sooke Potholes to Sooke Hills

Location and Important Values

A network of wild, forested hills exists on the edge of Greater Victoria. Known as the Sea to Sea Green Blue Belt, this natural corridor runs between Southwest Salt Spring Island and Sooke Basin creating a stunning backdrop for the city of Victoria. It provides the last sanctuary for native plants and wildlife displaced by urban sprawl. Its rugged summits overlook pristine woodland lakes and valleys offering places to hike and explore or to find peace from the hectic pace of life in a rapidly growing region.

Once completed, the Sea to Sea Green Blue Belt will protect 24,700 acres of wilderness and parkland located within 30 minutes from downtown Victoria. These wild, green hills are a defining feature of the Capital Region and their protection will impact the nature and quality of life on the island forever, for everyone.



Climbing the Bears near Peden Bluffs

Photo John Hasell



Sooke Hills

Photo Jade Vovers

The Sooke Hills are a popular hiking and climbing destination for Alpine Club members and other avid hikers. Drawn by the challenging terrain, the beauty of the landscape, and the rewarding views across Juan de Fuca Strait to the Olympics, hikers tackle the 5 km main trail, known by some as the Harrison Trail, in just two hours.



Grassie Lake

Photo Alison Spriggs

Too beautiful for words...too important to lose!



WILD BEACHES

Sandcut Beach

Masses of salal follow the contours of the trail down to Sandcut Beach with salmonberry and stink currant flourishing in the wettest places. Miniature gardens of diverse mosses, lichens, and mushrooms grace the tree bark and fallen logs, while licorice fern embedded in thick moss festoon the branches high in the tree canopy. Every old stump on the forest floor is alive with tiny plants and animals.

Where the trail reaches the crest of the bank overlooking the beach is almost magical. The suddenly audible crashing of the waves coincides with the vista of the Strait of Juan de Fuca and the backdrop of the Olympic Mountains to the southwest. The beach itself is nothing short of breathtaking; its smooth cobbles and piles of long bull kelp hug the high tide line. Driftwood piles along the upper beach from the winter storms, and in the spring and fall, gray whales can sometimes be seen just offshore.

This beach has a long history of human use. Ditidaht and other West Coast First Peoples traveling south by canoe to trade with T'souke and other Salishan peoples around Victoria used to stop along this stretch of beach to rest and camp.



Sandcut Beach

Photo Heather Skydt



Jordan River Beach

Photo Heather Skydt

Jordan River Beach

Located halfway between Sooke and Port Renfrew in Juan de Fuca Provincial Park, Jordan River is approximately 60 km northwest of Victoria. Established as a logging camp in the late 19th century, Jordan River has Vancouver Island's second hydroelectric power plant. The dam was built in 1911 and at the time Jordan River's population was over 1,000. Today it is less than 50% of what it was over 100 years ago. Currently, it is a popular site among winter surfers and is becoming increasingly popular for windsurfing.

"Jordan River is the best wave on the south island, and in the right conditions, it's the nicest wave in Canada. Even though not everyone surfs, surfing is a part of the west coast flavor that makes us culturally unique. It's important to protect those things that make us culturally distinct," says surfer Jeff Anderson. "When I envision surfing at Jordan River my mind is filled with memories of sitting out on the waves with friends. Thanks to this agreement, my children can have those same memories."

Photo Jade Vovvers

Too beautiful for words...too important to lose!



The Vision and Fundraising Goal

In continuation of a longstanding partnership, TLC and CRD Parks will be pursuing an opportunity to purchase 5,800 acres of Western Forest Products land in the Jordan River and Sooke Hills area, including Sandcut Beach, Jordan River Waterfront, and the Sooke Potholes Extension.

Protecting the area's Wild Hills and Beaches for future public access will ensure their continued recreational use as well as add to the Sea to Sea Green Blue Belt. As of September 2011, TLC requires \$2.7 million to complete our **Wild Hills and Beaches Campaign**. The amount might be reduced through carbon credits and the CRD's sale of the lands with lesser value.



Jordan River Beach

Photo Josh Lewis

Our Special Thanks

"To Alex Campbell, Co-founder of Thrifty Foods, for his remarkable gift of \$250,000 which launched our Wild Hills and Beaches Campaign. Mr. Campbell's commitment to community through his generous support of many worthy causes is renown. We are so grateful."
-Bill Turner

TLC Acquisitions

Sooke Hills Campaign

3,400 acres acquired from a private development company in 2001.

Sooke Potholes Campaign

156 acres, including 5 km of riverfront, acquired through a court-ordered sale from a developer in 2003.

Larry Talarico Memorial Campaign 2,300 acres of parkland acquired from a forest company in 2007.

Wild Hills and Beaches Campaign

a 2010 campaign to acquire from a forest company 5,800 acres of critical habitat and magnificent parkland in the Sooke Hills, as well as 3.5 km of shoreline between Jordan River and Sandcut Beach.



Sooke Hills

Photo John Hasell



Photo Allison Spriggs

Too beautiful for words...too important to lose!

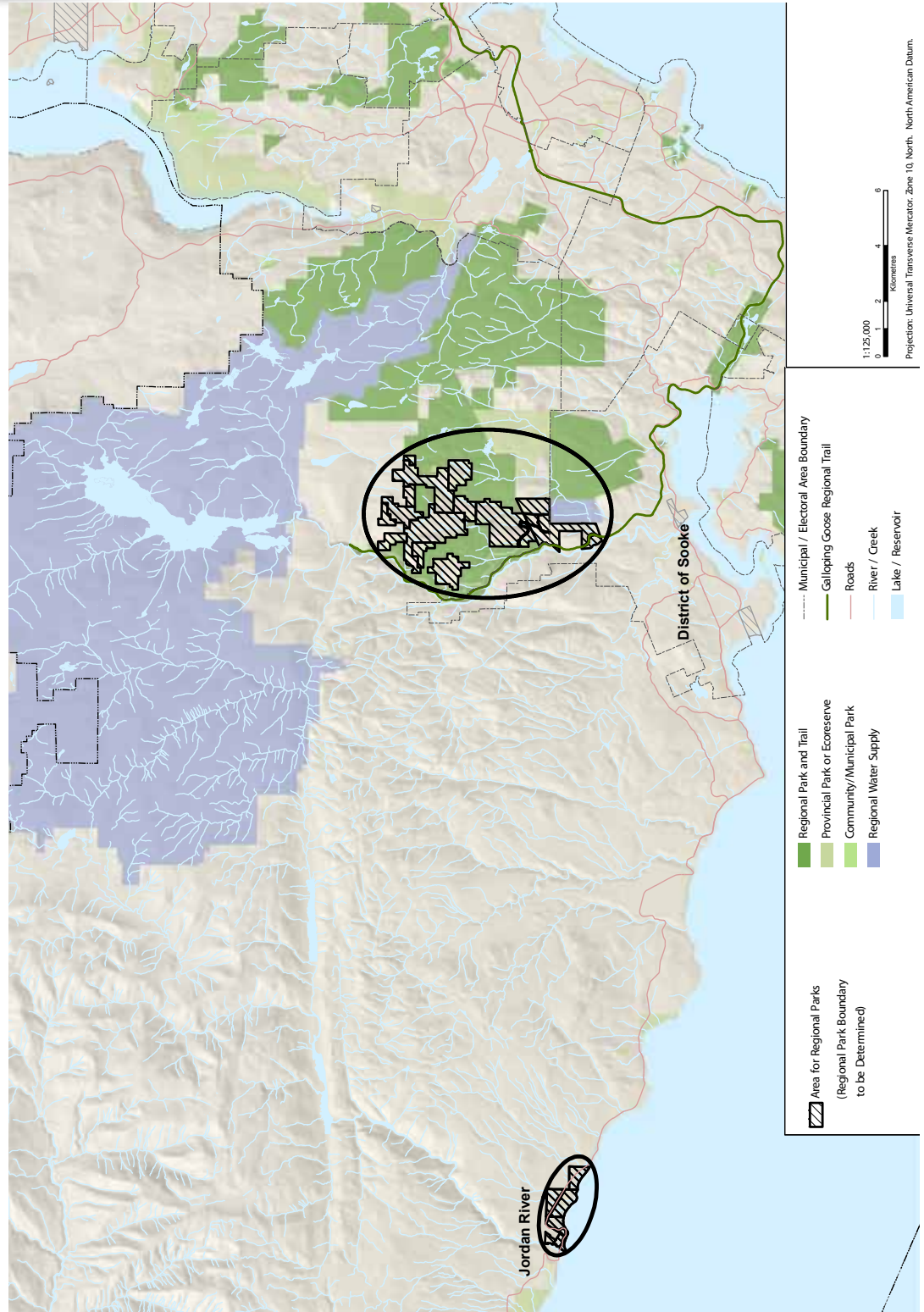


TLC The Land Conservancy

Special Places. Forever, for Everyone.



Photo Ian Fawcett



Too beautiful for words...too important to lose!

The Land Conservancy of British Columbia

Founded in 1997, The Land Conservancy (TLC) is a charitable land trust working on your behalf and on behalf of future generations throughout B.C. to protect areas of natural splendour, wildlife habitat, historical sites, agricultural lands, recreational, and community importance.

How TLC Works

TLC takes a leadership role in the acquisition and protection of natural lands and heritage sites, the creation of conservation covenants, and local stewardship programs.

TLC forms strong partnerships and alliances with a wide range of organizations, governments, companies, community groups, and individuals to achieve conservation results across B.C. Our mandate is to protect 'Special Places. Forever, for Everyone'.

How TLC Finances Projects

TLC is independent of government and controlled by an elected Board of Directors and over 8,700 active members. Funding comes primarily from individual donors, conservation partners, foundations, and businesses.

What TLC Has Achieved

In just over 14 years, TLC has protected over 125,000 acres of sensitive wildlife habitat, threatened heritage sites, and vital agricultural lands involving more than 300 projects. TLC has directly raised over \$45 million and leveraged another \$120 million to finance acquisitions and conservation programs throughout B.C.

Conservation Projects

Fort Shepherd Conservancy Area - TLC purchased this 2,200-acre property from Teck Cominco on the Columbia River south of Trail to ensure this unique bioclimatic and important winter range for wildlife would be protected forever.

Codd Island Wetlands - The 250-acre wetlands on the Alouette River in the Fraser Valley contains over 200 species of animals and is critical tidal spawning and rearing grounds for wild coho, steelhead and cutthroat trout.

Horsefly River Riparian Conservation Area - This 1,000-acre property in northern B.C. contains some of the most valuable sockeye salmon spawning habitat in North America with returns exceeding 2 million fish in peak years.

Heritage, Agriculture, and Recreation

TLC cares for numerous sites of heritage, agricultural, and recreational importance, including: B.C. Binning and Craigflower National Historical Sites, Ross Bay Villa, Abkhazi Gardens, and Historic Joy Kogawa House. Keating Farm and Talking Mountain ranch are productive, locally run agricultural sites. Skaha Bluffs and Sooke Potholes are nationally renowned recreational sites.

See our website for more information about TLC's projects and properties, including the ones you have just read about: conservancy.bc.ca

How You Can Support TLC

TLC depends on the generous support of individuals and businesses that believe what we do is important for the quality of life in B.C. now and for future generations. Please consider becoming a TLC Member and making a tax deductible donation so you and your family can contribute to making beautiful B.C. the best it can be.

TLC Properties

Baldwin House

Baldwin House is a two storey modern post and beam structure, located on the southern shore of Deer Lake in Burnaby. It is valued as a prime example of Burnaby's post Second World War modern heritage and progressive architectural style, as well as for its personal connections to internationally acclaimed architect, Arthur Erickson. Dr. William Baldwin and his wife, Ruth, personal friends of Erickson, commissioned him to design the house in 1963. The house is available for rent through TLC's holiday rental program.

Luke Creek Wildlife Corridor

The Luke Creek Wildlife Corridor, near Kimberley, B.C., provides a connection between the St. Mary River and the south and crown land to the North. The grassland habitats provide critical nesting and breeding grounds for songbirds and other bird species. Hiking and cross country ski trails throughout the property have also made it a popular recreation site in the community.

Talking Mountain Ranch

Talking Mountain Ranch is located on the west side of the Fraser River near Clinton, B.C. TLC purchased nearly 1,000 acres of land and continues to operate a working ranch on this property. The landscape encompasses a diversity of ecosystems and habitats from grasslands, riparian zones, wetlands, brush and transitional to sub-alpine forests.

Sooke Potholes

Acquired by TLC in 2005, the Sooke Potholes are one of the most recognizable and beloved features of the Southern Vancouver Island landscape. Stretching for 5 km along the Sooke River, the site contains deep, polished rock pools known as the potholes and are a popular swimming destination for locals and tourists.

Skaha Conservation Area

Located in the South Okanagan near Penticton B.C., the Skaha Bluffs have become an international renowned climbing destination. The rocky canyons and desert-like grasslands may be home to a wide array of at risk species including California Bighorn Sheep, Pallid Bat and the elusive Desert Night Snake.



Talking Mountain Ranch, near Clinton, B.C.

Photo Barry Booth

Help Create a World Class Parks Legacy for the Capital Region on Vancouver Island

Protect Our Wild Hills and Beaches

TLC and CRD Parks have worked together for over a decade in a visionary partnership to create a world class parks and protected areas system for Vancouver Island. Through this campaign over 7,400 acres of spectacular parkland has been saved.

Together we are advancing this vision through our Wild Hills and Beaches campaign to purchase 5,800 acres of land in the Jordan River, Sandcut Beach, and Sooke Hills area. TLC requires just over \$2,875,000 million to complete our contribution.

WILD HILLS

Sooke Potholes to Sooke Hills - a critical link in the Sea to Sea Green Blue Belt that includes a historic trail loop from Todd Creek to Charters Creek via Grasse Lake in the heart of the Sooke Hills wilderness area.

WILD BEACHES

Sandcut Beach - a West Coast paradise.
Jordan River Beach - a popular surfing destination.

Please help us make this parkland a reality.

Make your donation today!

YES! I want to help protect our Wild Hills and Beaches!

Here is my gift for a world class parks and trails legacy.

I would like to give:

\$100 \$250 \$1000 \$2500 \$

With this gift, I'd like to become a TLC Member

My preferred method of payment is:

- Pledge. Please contact me to arrange payment.
- Cheque. *Please make cheque payable to The Land Conservancy.*
- Credit Card: Visa Mastercard

Card # _____ Expiry Date _____

Name on Card _____ Signature _____

My contact details:

Name: _____

Spouse Name: _____

Address: _____

City: _____ Prov: _____ Code: _____

Home Phone: () _____

E-mail: _____

Please check here if you do not wish to be kept informed of TLC events and activities by email.

Please mail to: 301-1195 Esquimalt Road, Victoria, BC V9A 3N6

If you have any questions, please call 1-877-485-2422

Or give online at: **conservancy.bc.ca**

TLC respects your privacy. We will never sell, trade, or rent your name to another organization. Personal information collected is only used to deliver our services to you. Due to CRA Regulations the first \$35 of your membership gift (\$50 for families) is not tax deductible. All donations receive a tax receipt. Donations are subject to TLC's Donations Policy available at conservancy.bc.ca.

Charitable registration # 88902-8338 RR0001

O-00053A



Printed on 100% pcw paper