



Horsefly River Expansion Project

Help Protect some of B.C.'s Best Sockeye Salmon Habitat

The Horsefly River Riparian Conservation Area (HRRCA), located 25 km from the town of Horsefly, is one of The Land Conservancy of BC's first acquisitions. The property was acquired in stages between 1999 and 2006 because the Horsefly River is one of B.C.'s most valuable sockeye salmon rivers. Together this 1,000-acre property represents almost 12 km of river shoreline along the mid-section of the Horsefly River Valley. Over the years, TLC has dedicated hundreds of hours to restoring the site's fish and wildlife habitat.

Currently, TLC is purchasing 56 acres of mixed wood forest along the Horsefly River that is of incredible strategic value for wildlife conservation, and wild salmon conservation in particular. This new acquisition removes a piece of private land that is between the HRRCA and



Sockeye salmon spawning on the Horsefly River.

Photo Cornelius Iwan



Horsefly River Riparian Conservation Area in mist.

Photo Cornelius Iwan

Crown Land that was designated as a key wetland for moose, and an Old-growth Forest Management Area in the Horsefly River Sustainable Forest Management Plan.

When completed, this project will both increase the conservation value of the HRRCA and eliminate the possibility of future development along this section of the Horsefly River.

TLC and its partners require \$160,000 to protect this valuable salmon river system. Please make your donation today!

Photo Cornelius Iwan

Horsefly River Riparian Conservation Area

Location and Important Values

With this current acquisition, TLC is building on one of our most important projects. From 1999 to 2006 we have purchased and are currently managing over 1,000 acres of riparian habitat in the Horsefly River Valley, some 70 km north east of Williams Lake. This area, known as the Horsefly River Riparian Conservation Area (HRRCA) is situated along one of B.C.'s most valuable sockeye salmon rivers. It also provides habitat for large numbers of grizzly and black bears that congregate along the river during salmon spawning season. It is also home to a wide range of waterfowl, songbirds and mammals, particularly moose.

The parcel in question is the last remaining parcel of the Kroener Ranch and the only forested portion of this ranch. It is immediately downstream of, and is connected to, the HRRCA. When acquired, the property would add 56 acres of mixed wood forest, wetlands, and streamside habitat to the HRRCA.

In addition to increasing the overall size of the HRRCA, the acquisition of this property will link the Crown Land around Stillwater Lake, an area that has been designated as a key wetland for moose, and an Old-growth Management Area in the Sustainable Forest Management Plan for the Horsefly River Watershed.

With this acquisition, the protected area of riparian habitat in the Valley would effectively be extended by a further 2 km on the north side of the Horsefly River and by at least an additional 140 acres (86 acres of crown land and 56 acres of private land).



American redstart, one of over 100 species of birds that live in the Horsefly River Valley.

Photo Cornelius Iwan



Columbine, one of the many plant species at Horsefly.

Photo Cornelius Iwan

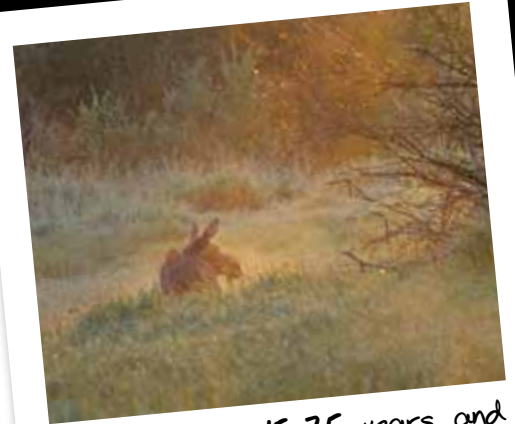


Horsefly River Riparian Conservation Area Trivia:

Returning runs of sockeye salmon on the Horsefly River have exceeded those on the Adams River.

Over 100 species of birds recorded in the valley.

Two provincially blue-listed bird species, Sandhill Crane and American Bittern are both found in the area. Several other birds found in the area are species of conservation concern.



Moose can live 15-25 years, and weighs as much as 700 kgs.

Photo Cornelius Iwan



More than half of Grizzly bears in Canada live in B.C., like this one enjoying a fish snack.

Photo Cornelius Iwan

Every year, Grizzly and black bears congregate along river in fall to feed on returning salmon.



Nearly one-fourth of the Fraser River's Sockeye Salmon run spawn at Horsefly.

Photo Cornelius Iwan

The Vision and Fundraising Goal

TLC and its partners are looking to raise \$160,000 to protect this incredibly important part of the Horsefly River Valley, home to one of B.C.'s most valuable sockeye salmon rivers.

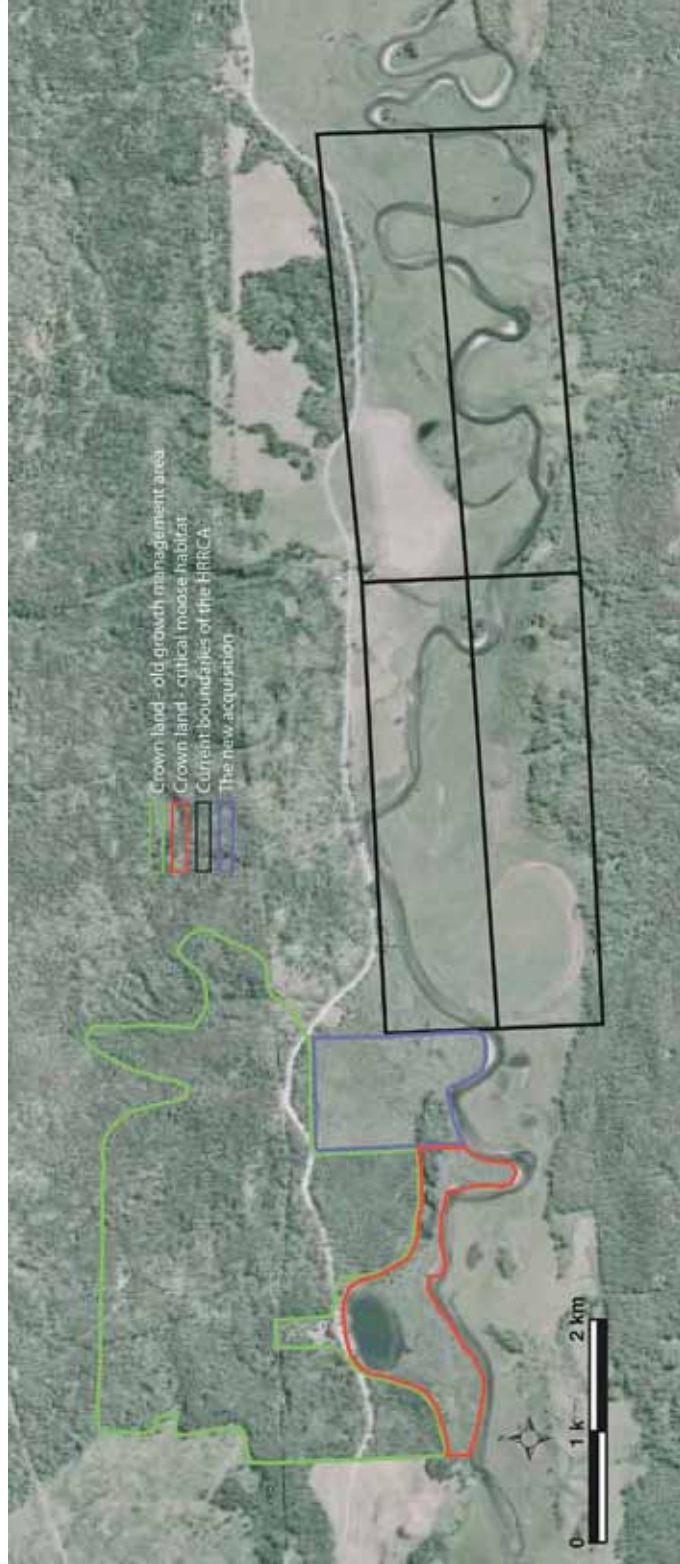


TLC The Land Conservancy

Special Places. Forever, for Everyone.



Photo: Cornelius Iwan



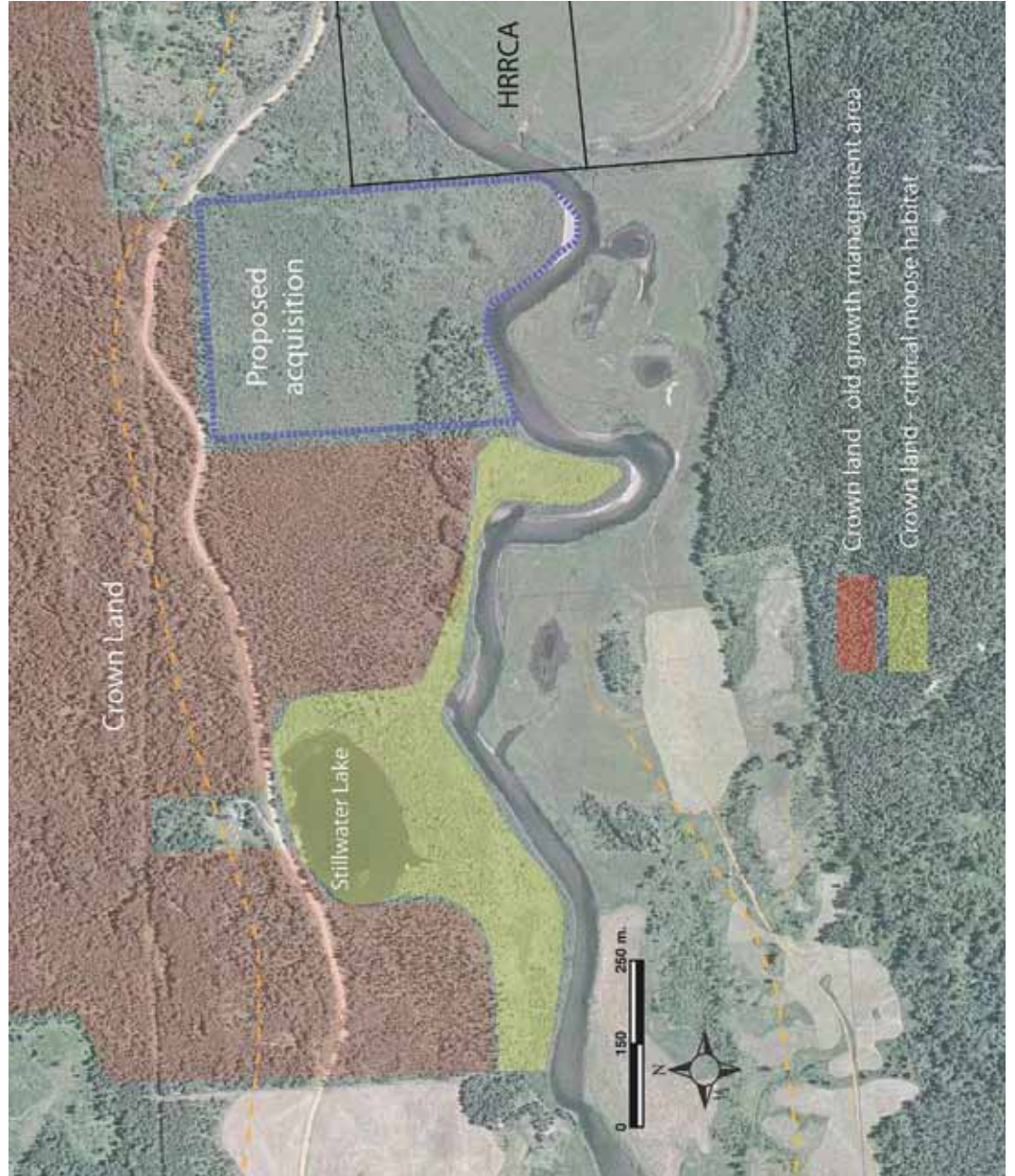
New acquisition in relation to the western section of the HRRCA

Note: To the east of this map are many other TLC HRRCA parcels.

Protecting B.C.'s Wild Salmon Rivers



Photo Barry Booth



Detailed map of area that we are acquiring.



The Land Conservancy of British Columbia

Founded in 1997, The Land Conservancy of BC (TLC) is a charitable land trust working on your behalf and on behalf of future generations to protect areas of natural splendour, wildlife habitat, historical sites, agricultural lands, recreational, and community importance.

How TLC Works

TLC takes a leadership role in the acquisition and protection of natural lands and heritage sites, the creation of conservation covenants, and local stewardship programs.

TLC forms strong partnerships and alliances with a wide range of organizations, governments, companies, community groups, and individuals to achieve conservation results across B.C. Our mandate is to protect 'Special Places. Forever, for Everyone'.

How TLC Finances Projects

TLC is independent of government and controlled by an elected Board of Directors and over 7,700 active members. Funding comes primarily from individual donors, conservation partners, foundations, and businesses.

What TLC Has Achieved

In just over 13 years, TLC has protected over 125,000 acres of sensitive wildlife habitat, threatened heritage sites, and vital agricultural lands involving more than 300 projects. TLC has directly raised over \$45 million and leveraged another \$120 million to finance acquisitions and conservation programs throughout B.C.

Conservation Projects

Fort Shepherd Conservancy Area - TLC purchased this 2,200-acre property from Teck Cominco on the Columbia River south of Trail to ensure this unique bioclimatic and important winter range for wildlife would be protected forever.

Codd Island Wetlands - The 250-acre wetlands on the Alouette River in the Fraser Valley contains over 200 species of animals and is critical tidal spawning and rearing grounds for wild coho, steelhead and cutthroat trout.

Horsefly River Riparian Conservation Area - This 1,000-acre property in northern B.C. contains some of the most valuable sockeye salmon spawning habitat in North America with returns exceeding 2 million fish in peak years.

Heritage, Agriculture, and Recreation

TLC cares for numerous sites of heritage, agricultural, and recreational importance, including: B.C. Binning and Craigflower National Historical Sites, Ross Bay Villa, Abkhazi Gardens, and Historic Joy Kogawa House. Keating Farm and Talking Mountain ranch are productive, locally run agricultural sites. Skaha Bluffs and Sooke Potholes are nationally renowned recreational sites.

See our website for more information about TLC's projects and properties, including the ones you have just read about: conservancy.bc.ca

How You Can Support TLC

TLC depends on the generous support of individuals and businesses that believe what we do is important for the quality of life in B.C. now and for future generations. Please consider becoming a TLC Member and making a tax deductible donation so you and your family can contribute to making beautiful B.C. the best it can be.



TLC Properties

Baldwin House

Baldwin House is a two storey modern post and beam structure, located on the southern shore of Deer Lake in Burnaby. It is valued as a prime example of Burnaby's post Second World War modern heritage and progressive architectural style, as well as for its personal connections to internationally acclaimed architect, Arthur Erickson. Dr. William Baldwin and his wife, Ruth, personal friends of Erickson, commissioned him to design the house in 1963. The house is available for rent through TLC's holiday rental program.

Luke Creek Wildlife Corridor

The Luke Creek Wildlife Corridor, near Kimberley, B.C., provides a connection between the St. Mary River and the south and crown land to the North. The grassland habitats provide critical nesting and breeding grounds for songbirds and other bird species. Hiking and cross country ski trails throughout the property have also made it a popular recreation site in the community.

Talking Mountain Ranch

Talking Mountain Ranch is located on the west side of the Fraser River near Clinton, B.C. TLC purchased nearly 1,000 acres of land and continues to operate a working ranch on this property. The landscape encompasses a diversity of ecosystems and habitats from grasslands, riparian zones, wetlands, brush and transitional to sub-alpine forests.

Sooke Potholes

Acquired by TLC in 2005, the Sooke Potholes are one of the most recognizable and beloved features of the Southern Vancouver Island landscape. Stretching for 5 km along the Sooke River, the site contains deep, polished rock pools known as the potholes and are a popular swimming destination for locals and tourists.

Skaha Conservation Area

Located in the South Okanagan near Penticton B.C., the Skaha Bluffs have become an international renowned climbing destination. The rocky canyons and desert-like grasslands may be home to a wide array of at risk species including California Bighorn Sheep, Pallid Bat and the elusive Desert Night Snake.



Talking Mountain Ranch, near Clinton, B.C.

Photo Barry Booth

Horsefly River Expansion Project

Help Protect some of B.C.'s Best Sockeye Salmon Habitat

The Horsefly River Riparian Conservation Area (HRRCA), located 25 km from the town of Horsefly, is one of The Land Conservancy of BC's first acquisitions. The property was acquired in stages between 1999 and 2006 because the Horsefly River is one of B.C.'s most valuable sockeye salmon rivers. Together this 1,000-acre property represents almost 12 km of river shoreline along the mid-section of the Horsefly River Valley. Over the years, TLC has dedicated hundreds of hours to restoring the site's fish and wildlife habitat.

Currently, TLC is purchasing 56 acres of mixed wood forest along the Horsefly River that is of incredible strategic value for wildlife conservation, and wild salmon conservation in particular. This new acquisition removes a piece of private land that is between the HRRCA and Crown Land that was designated as a key wetland for moose, and an Old-growth Forest Management Area in the Horsefly River Sustainable Forest Management Plan.

When completed, this project will both increase the conservation value of the HRRCA and eliminate the possibility of future development along this section of the Horsefly River.

TLC and its partners require \$160,000 to protect this valuable salmon river system. Please make your donation today!

Sockeye Salmon, photo Cornelius Iwan

YES! I want to help protect our Wild Salmon Rivers!

Here is my gift for the Horsefly River Riparian Conservation Area.

I would like to give:

\$50 \$100 \$250 \$1000 \$ _____

With this gift, I'd like to become a TLC Member

My preferred method of payment is:

- Pledge. Please contact me to arrange payment.
- Cheque. *Please make cheque payable to The Land Conservancy.*
- Credit Card: Visa Mastercard

Card # _____

Expiry Date _____

Name on Card _____

Signature _____

My contact details:

Name: _____
 Spouse Name: _____
 Address: _____
 City: _____ Prov: _____ Code: _____
 Home Phone: (_____) _____
 E-mail: _____

Please check here if you do not wish to be kept informed of TLC events and activities by email.

Please mail to: 301-1195 Esquimalt Road, Victoria, BC V9A 3N6


If you have any questions, please call 1-877-485-2422

Or give online at: **conservancy.bc.ca**

TLC respects your privacy. We will never sell, trade, or rent your name to another organization. Personal information collected is only used to deliver our services to you. Due to CRA Regulations the first \$35 of your membership gift (\$50 for families) is not tax receiptable. All donations receive a tax receipt. Donations are subject to TLC's Donations Policy available at conservancy.bc.ca.

Charitable registration # 88902-8338 RR0001

O-00036

 Printed on 100% pcw paper